



# Premier EVACS 16 Voice Alarm System

# Introduction

Studies have consistently shown that people respond more readily and with **less panic** in a fire condition (and other emergency situations) when spoken instructions are used rather than loud electric sounders or bells.

The Premier EVACS 16 **Voice Evacuation** Control Panel has been designed and developed as a stand alone system that will compliment any Zeta Fire Detection System.

The control panel is a modular design, allowing **up to 16 channels** in steps of 4 (i.e. 4, 6, 8, 12 & 16 channels).

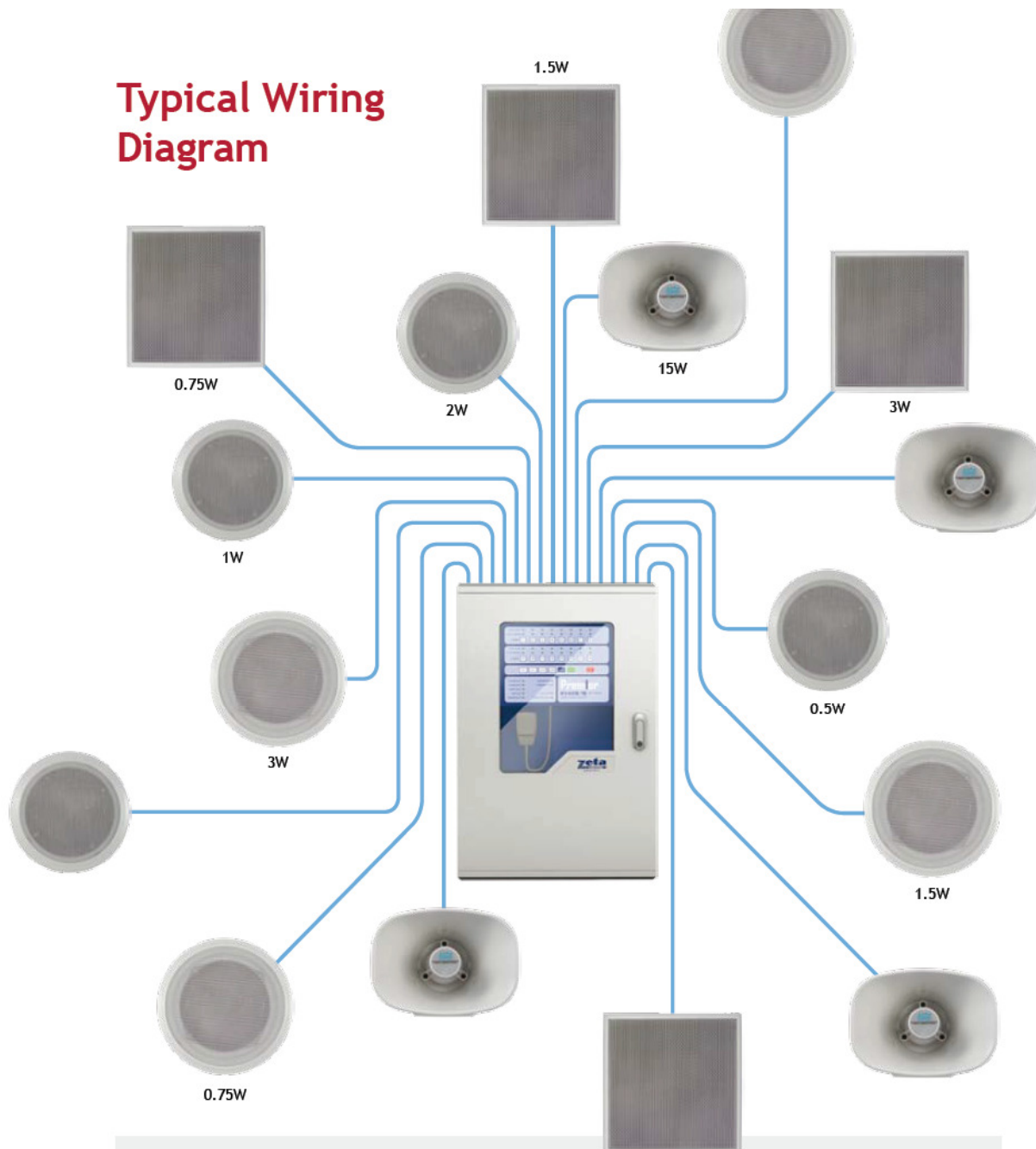
A total of 240 Watts (15 Watts per channel) are available with a **variety of speakers** to meet all needs.

The Premier EVACS 16 **Configuration Software** lets you easily customise and programme a huge range of the panel's features including; volume control, trigger matrix, microphone configuration, recording / downloading bespoke alert and evacuate messages.



Model	EVAC16/4	EVAC16/8	EVAC16/12	EVAC16/16
Part No.	180-100	180-101	180-102	180-103
No. of Channels	4	8	12	16
Output/Channel	15 Watts	15 Watts	15 Watts	15 Watts
Total Watts	60 Watts	120 Watts	180 Watts	240 Watts
Common Trigger	Alert or Evacuate	Alert or Evacuate	Alert or Evacuate	Alert or Evacuate
Individual Trigger	4	8	12	16
Channel Audio Voltage	100V Line	100V Line	100V Line	100V Line
Mains Voltage	230V± 10% - 15%, 50/60Hz	230V± 10% - 15%, 50/60Hz	230V± 10% - 15%, 50/60Hz	230V± 10% - 15%, 50/60Hz
Integral Power Supply	5.0 Amp Power Supply Module to EN54 part 4	5.0 Amp Power Supply Module to EN54 part 4	5.0 Amp Power Supply Module to EN54 part 4	5.0 Amp Power Supply Module to EN54 part 4
Max. Battery Back-up	2 x 17.0 AH - 12V SLA	2 x 17.0 AH - 12V SLA	2 x 17.0 AH - 12V SLA	2 x 17.0 AH - 12V SLA
Dimensions (h x w x d)	732 x 485 x 145mm	732 x 485 x 145mm	732 x 485 x 145mm	732 x 485 x 145mm
Weight	22.5 kg	23.5 kg	24.5 kg	25.5 kg

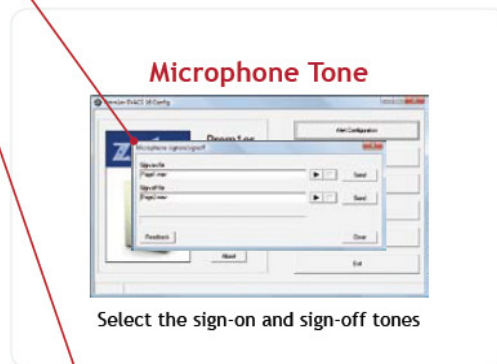
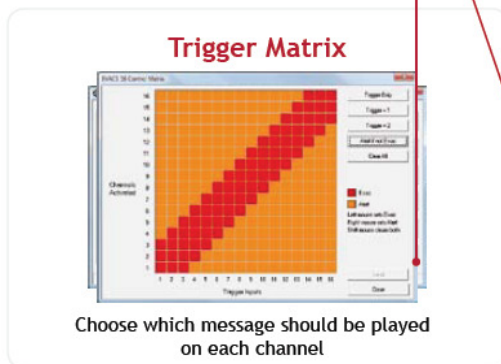
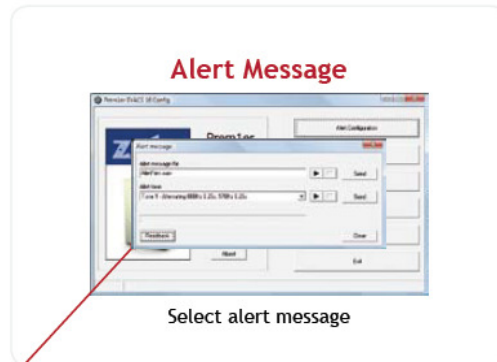
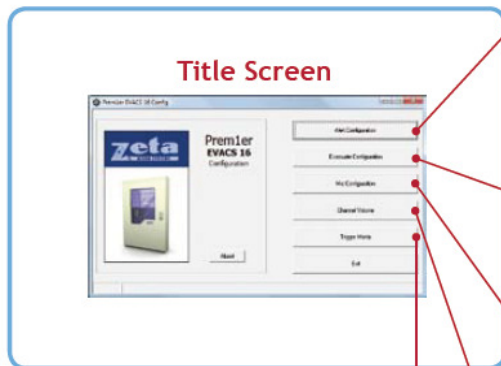
## Typical Wiring Diagram



### Product Features

- ✓ Modular system, can be supplied as 4, 8, 12 or 16 channel
- ✓ Complies with EN54 part 16
- ✓ Alert message up to 1 minute
- ✓ Evacuate message up to 1 minute
- ✓ CE marked
- ✓ Messages are transferred to the system via a PC
- ✓ 15W per channel
- ✓ Can play evacuate to selected channel(s) & alert to all others
- ✓ All speakers have selectable power output
- ✓ Choice of speakers available:-
  - ✓ 6" Ceiling speaker
  - ✓ 8" Ceiling speaker
  - ✓ Wall Mount speaker
  - ✓ External Horn Speaker

# Configuration Software



# Speakers



ZT-05C



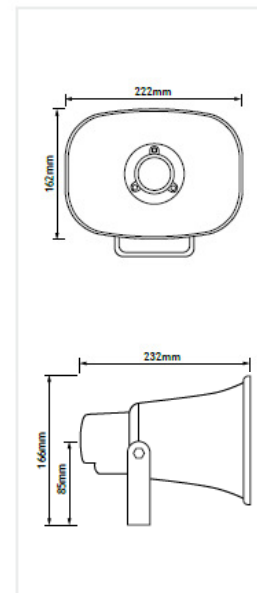
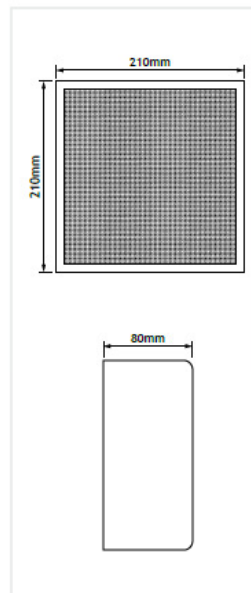
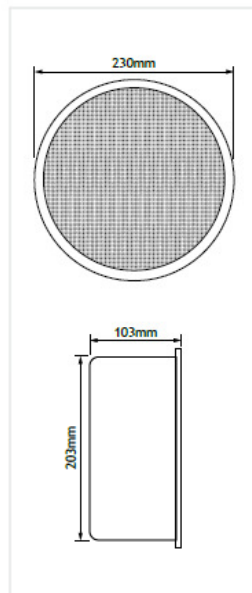
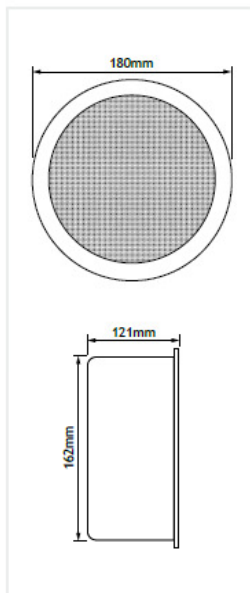
ZT-06C



ZT-08W



ZT-67Q



Model	ZT-05C	ZT-06C	ZT-08W	ZT-67Q
Part No.	180-110A	180-111A	180-112A	180-113A
Rated Power	2W / 1W / 0.5W	3W / 1.5W / 0.75W	3W / 1.5W / 0.75W	15W
Input Impedance	100V 5k $\Omega$ (2W) 10k $\Omega$ (1W) 20k $\Omega$ (0.5W)	100V 3.33k $\Omega$ (3W) 6.66k $\Omega$ (1.5W) 13.33k $\Omega$ (0.75W)	100V 3.33k $\Omega$ (3W) 6.66k $\Omega$ (1.5W) 13.33k $\Omega$ (0.75W)	100V 0.66k $\Omega$ (15W)
Input Voltage	100V	100V	100V	100V
Frequency Response	120Hz ~ 15KHz	100Hz ~ 15KHz	120Hz ~ 15KHz	250Hz ~ 7KHz
Maximum SPL	93dB	91dB	90dB	106dB (+/- 2dB)
Dimensions	$\phi$ 180 x 121mm	$\phi$ 230 x 103mm	210 x 210 x 80mm	222 x 232 x 166mm
Weight	1.44kg	1.97kg	1.93kg	1.54kg