



# Wireless Sounder

## Key Features



EN54-25 approved



868 - 870 MHz operating frequency



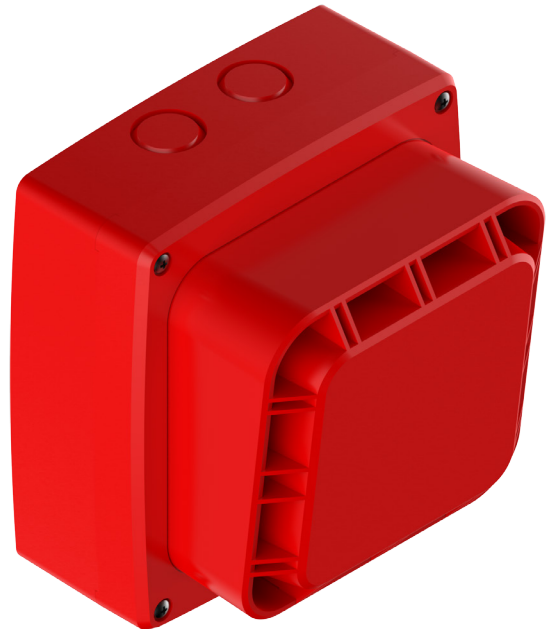
Powered by lithium metal batteries



22 Tone patterns (user selectable)



Available in red or white



## Overview



The Wi-Fyre Wireless Sounder has been designed for wall or ceiling mounting. It is available in either red or white finishes and has 22 user selectable tones to choose from, in addition to a volume control.

## Approvals

All Wi-Fyre Devices are fully certified to EN54-25 - the European product standard for wireless fire alarms, which necessitates third party assessment to confirm that it meets very specific requirements.

Wi-Fyre also complies with ENTSI 300:200 - the standard requirements for the Radio Equipment Directive (RED), and BS 5839-1 - the code of practise for design, installation, commissioning and maintenance of fire alarm systems in non-domestic premises.



CE 16  
1008



EF-110-DoP-1

1008-CPR-MC 69251487  
0001






## Tech Specs

### Radio

 Operating Frequency	868 - 870 MHz, 14dBm
 Range	150m open area

### Sound

 Sounder Type	A
 Sound Output @ 1m	102dB (this applies to 'TONE 0' 800Hz and 970Hz, 500ms each)
 Tone Patterns	22

### Electrical

 Power Source



4 x Lithium AA Cell (Saft LS14500)



2 x Lithium C Cell (Saft LS26500)

 Battery Life

Up to 3 years

### Environmental

 Operating Temperature	-10 to +55°C
 Humidity	10 to 93% RH (non-condensing)
 Ingress Protection	IP21
 Design Environment	Indoor use only

### Mechanical

 Housing Material

ABS

 Colour



Red



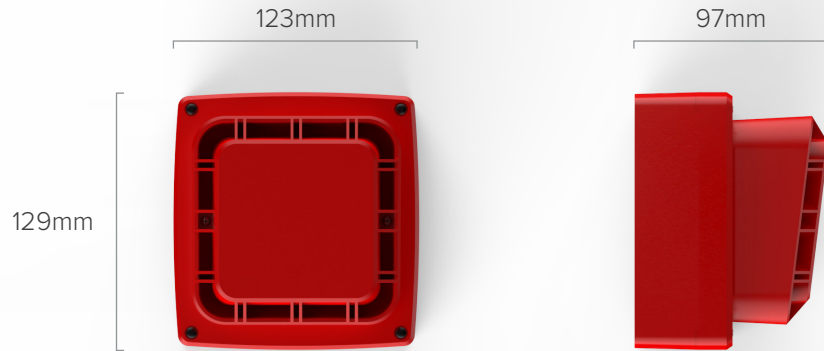
White



## Tech Specs

### Size & Weight

#### Size



#### Weight

0.64kg (1.41 lbs)

## Ordering Information

Part Code	Description
10-030	Wireless Sounder with Batteries, Red
10-031	Wireless Sounder with Batteries, White
10-081	Wireless Sounder & I/O Lithium Metal Battery Pack